



روضة وهبة تماري
Wahbeh Tamari KG

Wahbeh Tamari KG at a Glance



Accredited by



معتمدة من

<p>Inquirers Team Spirit Team Spirit Inquirers</p>	<p>روح الفريق روح الفريق روح الفريق روح الفريق</p>	<p>ذوو مبادئ Principled التعاون Cooperation الطيبة Kindness</p>	<p>مفكرون Thinkers مفكرون Thinkers</p>	<p>متوازنون Balanced مُنفتحو العقل Open-Minded</p>	<p>التطور Development التسامح Tolerance</p>
<p>Digital مُتسائلون Digital مُتسائلون</p>	<p>عاجزان Diligence عاجزان Diligence</p>	<p>الشفافية Transparency الشفافية Transparency</p>	<p>المحبة NOS المحبة NOS</p>	<p>الصديق Honesty الصديق Honesty</p>	<p>العطاء Giving العطاء Giving</p>
<p>Reflective متأملون Reflective متأملون</p>	<p>عالميون Global عالميون Global</p>	<p>التواضع Humbleness التواضع Humbleness</p>	<p>Love Love Love Love</p>	<p>الرّوح الرّياضيّة Sportsmanship الرّوح الرّياضيّة Sportsmanship</p>	<p>المفجرة Forgiveness المفجرة Forgiveness</p>
<p>Communicators مُتواصلون Communicators مُتواصلون</p>	<p>التطوع Volunteerism التطوع Volunteerism</p>	<p>الأخلاق Morals الأخلاق Morals</p>	<p>المساواة Equality المساواة Equality</p>	<p>التكافل Community التكافل Community</p>	<p>التكافل Fellowship التكافل Fellowship</p>
<p>Knowledgeable مُطالعون Knowledgeable مُطالعون</p>	<p>Compassion Compassion Compassion Compassion</p>	<p>Excellence Excellence Excellence Excellence</p>	<p>Risktakers Risktakers Risktakers Risktakers</p>	<p>Excellence Excellence Excellence Excellence</p>	<p>Excellence Excellence Excellence Excellence</p>

WAHBEH TAMARI KG AT A GLANCE



JOIN OUR FAMILY

We warmly welcome you and your children and look forward to the opportunity to share an exciting and enjoyable educational journey together, in which we prepare our little ones to go on to 1st Grade at our “Big School”, the National Orthodox School-Shmaisani (NOS), whether in the national or international programme. We offer a bilingual programme where children learn equally in both Arabic and English.

Our Arabic curriculum is based on the learning outcomes set by the Jordanian Ministry of Education, and the English curriculum based on the learning outcomes of the British Cambridge Primary Programme.

At Whabeh Tamari KG, we work to help our little ones develop balanced personalities that are well-rounded from all aspects, including mental, physical and social-emotional, so they can take their first steps towards the wider world and the future with greater confidence and preparedness. We provide the ideal environment for them, rich with play and fun while offering endless learning opportunities, so they may enjoy their childhood and accumulate happy, fruitful experiences and memories that stay with them as they grow.

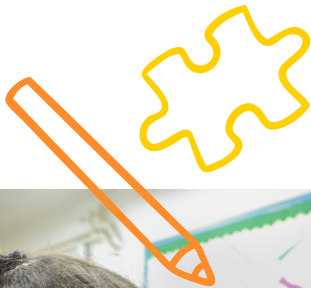


OUR KINDERGARTEN

Wahbeh Tamari KG is the kindergarten of the National Orthodox School-Shmaisani (NOS), which was founded in 1960, as the first educational institution of the Orthodox Educational Society (OES), and the first coeducational school in Jordan.

We moved to our present location in 1974, when the heirs of the late Mr. Wahbeh Tamari generously donated the funds for the construction of a kindergarten on a lot of land owned by the Orthodox Educational Society; hence the name, in commemoration of Mr. Tamari.

Wahbeh Tamari Kindergarten is accredited by the Council of International Schools (CIS) since 2014, as part of the accreditation obtained by the NOS-Shmaisani, which was one of the first four schools in Jordan to be accredited by the CIS.



OUR MISSION

Since Wahbeh Tamari KG is the kindergarten of the National Orthodox School (NOS)-Shmaisani, we share the same Vision, Mission and Aims:

NOS, a co-educational and non-profit school endeavours to provide a safe and inspiring learning/teaching environment that stimulates creativity to enrich society with informed, patriotic generations who believe in the values of love, peace and coexistence and who are deeply rooted in their heritage. We seek to prepare generations who are well-equipped intellectually, morally and spiritually to realise their maximum potential, pursue their aspirations and actively serve their homeland and humanity at large in an inclusive environment and in partnership with a dedicated school community sharing the same values.

CHILD-CENTRED TEACHING & LEARNING ENVIRONMENT



Our Arabic and English home-room teachers provide the classroom with the necessary learning materials and activities to achieve the learning outcomes that prepare children to develop creativity, critical thinking, communication, responsibility and self-confidence.





WE PLAY TO LEARN AT OUR KG

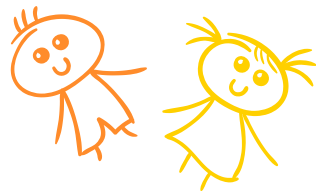
Children at Wahbeh Tamari Kindergarten learn through play. Each classroom is divided into centres or learning stations. Children choose which centre they want to play in and move between centres according to certain agreed upon rules. They get the opportunity to develop and explore individual interests and skills, resourcefulness and independence. The main centres are:

Art - Blocks - Mathematics - Science - Information Technology - Language - Reading

These centres are organised in a manner to integrate different learning styles and are equipped with selected materials, educational games and models that are changed according to our monthly theme and objectives.

At Wahbeh Tamari KG we encourage our little ones to be lifelong learners, through exposure to various experiences. Children acquire the needed knowledge and skills to enhance self-learning in a stimulating environment that promotes creativity. They are able to work individually and in groups, on age-appropriate research and scientific experiments, to develop their problem-solving skills, nurture their curiosity and improve their effective interaction and self-confidence.

OUR CHILDREN'S PERSONALITIES



To help build our little ones' personalities and enrich their learning experience, we encourage them to participate in:

- Local competitions.
- "Show & Tell" activities where they speak in front of their class groups about different subjects.
- Kindergarten's annual concerts and shows.

We also plan celebrations, visits, field trips, and invite specialised guest speakers, according to our educational units.

FUN AT OUR KG

Children spend an enjoyable time at Wahbeh Tamari Kindergarten within a daily programme, according to a set schedule that includes the following activities:

Daily Routine - Circle Time - Educational Corners - Play Time (outdoor in summer and indoor in winter) - Snack Time - End of Day Meeting.

The daily programme also includes one of the following activities:

Music - Computer - Physical Activity - Dance - Library - Educational Kitchen.

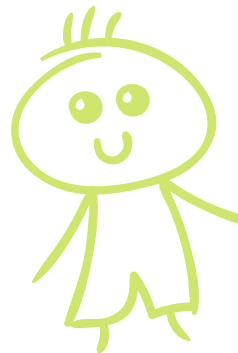




WHAT CHILDREN LEARN AT WAHBEH TAMARI KG

At Wahbeh Tamari KG, children learn to:

- Love God, be grateful for His blessings and help those in need.
- Exhibit a high sense of ethical awareness and demonstrate a sense of belonging to their society and humanity at large.
- Share and respect others and their rights.
- Practice healthy habits and personal hygiene.
- Protect themselves from all sorts of harm.
- Express themselves and their feelings in a positive manner.
- Protect the environment and its ecosystem.
- Use technology in a safe, appropriate manner and be responsible digital citizens.
- Develop basic skills in Mathematics.
- Develop basic skills in Science (observation, experimentation, prediction, measurement).
- Develop basic Arabic and English language skills (listening, speaking, reading, writing).



OUR CURRICULUM



We choose our curriculum carefully, focusing on all aspects of a child's growth (social, emotional, physical and mental development), through the adoption of integrated and diverse thematic units stemming from the children's interests and environment.



ASSESSING OUR CHILDREN'S PROGRESS

Children's assessment is an ongoing process at Wahbeh Tamari KG, one which aims to continuously measure the level and extent of each child's development in all aspects involving physical, social, emotional and mental development. This is done by monitoring the children daily, from the moment they enter the kindergarten in the morning until they leave. An assessment report card is sent to parents after the end of each educational unit, indicating the level of achievement of the objectives that have been set during that specific unit.



OUR TEACHERS

We take the utmost care to select a team of highly qualified educators who will diligently work to provide the best for our beloved children, and we provide continuous professional development training to ensure that our team members remain informed and trained on the latest developments in the field of education.

WE CARE FOR OUR CHILDREN'S PARENTS

At Wahbeh Tamari KG, we seek to build a trusting relationship with children's parents. We make sure to communicate constantly with the families of our little ones, through circulars and newsletters sent by e-mail to the KG family e-mail accounts set up specifically for this purpose, or on the class WhatsApp groups. We set individual meetings for parents with homeroom teachers at the beginning of the school year and during the first and second semesters to discuss their child's growth and development. We also invite parents to attend seminars, lectures, activities and celebrations.

We always welcome feedback from parents by phone or appointment, to further discuss any matters or concerns as we strongly believe in the importance of our partnership in achieving the best for their children and ours.



We welcome you with open arms



OUR KG IN NUMBERS

4-6
Age Group

350
Children

80-90m²
Classrooms



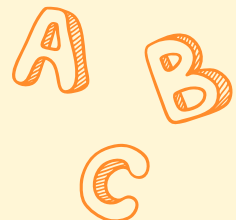
7:30 a.m.
2:00 p.m.
KG Hours

12
Classrooms
KG1 & KG2

55
Team
Members



Waiting
Class Service



**COME PLAY & LEARN WITH US
AT WAHBEH TAMARI KG!**



Tel هاتف | +962 (6) 566 2411 | Mob خلوي | +962 (79) 506 0026
ص ب 941502 عمان 11194 الأردن، 3 شارع ساطع الحصري، الشميساني
P.O.Box 941502 Amman 11194 Jordan, 3 Sate' Al-Husari St, Shmaisani
info.tamari@nos.edu.jo | www.nos.edu.jo |   WahbehTamariKindergarten

